



KONICA MINOLTA

**Web-based device management** all from a single point, to check status, change settings, and control every MIB-compliant MFP on the network.

**One on-screen list** presents information on all your bizhub® and MIB-compliant MFPs—each device identified by its own icon and IP address.

**Automatic discovery** of networked devices; direct link to PageScope Web Connection software built into every Konica Minolta bizhub device or a link to MIB-compliant devices of other manufacturers.

**Automatic Email notification** of device alerts and device recoveries, so IT administrators or management personnel can respond more quickly.

**Total print/copy/scan counter** lets you track total device usage as well as usage by account code\*—and you can retrieve information via Email.

**Three authentication levels** allow device status viewing by high-access administrators, mid-access registered users, and low-access guests.

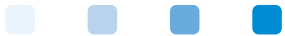
**Powerful server functionality** allows one server to manage up to 250 networked MFPs; servers can also be linked to increase the number of devices managed.

**Minimizes worry** about coordinating different device management software utilities on cross-platform network connections.

**Boosts productivity** by speeding everyday administrative functions and eliminating the need to visit each device to check its status and change settings.

**Adds value** to your document imaging system—and helps you realize the full productivity benefits of bizhub workflow management.

**Integrates seamlessly** with a total suite of PageScope software solutions to streamline workflow and maximize productivity, scan and store files, share documents, route information, check meter reads, speed production printing and more.



**Network Device Management Software Solution.** Expanding networks. Growing demands. Multiple devices—some old some new. For IT administrators, the need is clear: one platform to manage, control, and report on device status and document workflow throughout your organization. To save time, increase productivity, and control costs.

# PageScope Net Care Device Manager



The essentials of imaging



# PageScope Net Care Device Manager

## PageScope Net Care Specifications

**NETWORK ENVIRONMENT:**  
Ethernet (10/100BaseT)  
Token Ring (4–16 Mbps)  
TCP/IP Protocol

**SERVER REQUIREMENTS:**  
CPU: Inter® Pentium®  
300 MHz or higher  
RAM: 128 MB minimum

**SERVER OPERATING SYSTEMS:**  
Windows 98/Me/2000/NT 4.0  
(SP3)/XP  
Solaris™ 2.6/7/8  
Linux (x86, kernel 2.2.12 and  
glibc 2.1.2–11 or higher)

**CLIENT OPERATING SYSTEMS:**  
Windows 98/Me/2000/NT 4.0  
(SP3)/XP  
Solaris™ 2.6/7/8  
Linux (x86, kernel 2.2.12 and  
glibc 2.1.2–11 or higher)  
Mac OS 8/9/X

**CLIENT WEB BROWSER REQUIREMENTS:**  
**JAVA Mode:**  
Microsoft Internet Explorer 4.x or higher  
Netscape Communicator 4.x or higher  
Netscape 6.x or higher  
**JAVA™ Plug-in 1.4 or higher**  
**HTML Mode:**  
Microsoft Internet Explorer 4.x or higher (4.5 or higher for Mac environments)  
Netscape Communicator 4.x or higher  
Netscape 6.x or higher

**LANGUAGE SUPPORT:**  
English, Czech, Danish, German, Spanish, French, Italian, Japanese, Dutch

Design & specifications are subject to change without notice.

© 2009 KONICA MINOLTA BUSINESS SOLUTIONS U.S.A., INC. All rights reserved. Reproduction in whole or in part without written permission is prohibited. Konica Minolta and The essentials of imaging are trademarks of KONICA MINOLTA HOLDINGS, INC. bizhub and PageScope are registered trademarks of KONICA MINOLTA BUSINESS TECHNOLOGIES, INC. All other brands and product names are registered trademarks or trademarks of their respective owners.



PAGESCOPE SOFTWARE



KONICA MINOLTA

KONICA MINOLTA BUSINESS SOLUTIONS U.S.A., INC.

100 Williams Drive  
Ramsey, NJ 07446

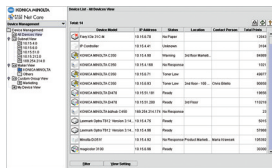
[www.kmbs.konicaminolta.us](http://www.kmbs.konicaminolta.us)  
[www.kmbs.konicaminolta.us/solutions](http://www.kmbs.konicaminolta.us/solutions)

## A smarter solution for managing multiple devices.

How many printer/copier/scanners do you have? How many will you add in the future, to keep pace with print output demands and increasing electronic document traffic? And how will you manage all these devices in a climate of shrinking budgets and stressed personnel resources? The answer is PageScope® Net Care Device Manager, from Konica Minolta.

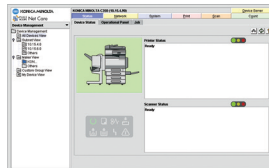
A simple web-based interface lets you view your entire fleet of Konica Minolta bizhub multifunctional products, plus MIB-compliant MFP's from other manufacturers—all from a single point, so you never have to leave your desk. Devices can be set up quickly and easily in a familiar GUI interface. All your MIB-compliant devices are identified by icons and displayed on one screen, so setup and management are easy. You can check status for each device, including consumable status. Icons alert you to conditions that may affect print/scan readiness. You can also receive Email notifications when an error occurs; such as when paper needs to be replenished or when the toner is low—so response time to queries is quicker. Additionally, you will be able to proactively solve problems before they impact user productivity. And you'll have complete counter-reading by device and by account code\*, to simplify your administrative reports.

PageScope Net Care Device Manager does it all—and meets wide-ranging business needs today and tomorrow, from small offices to large enterprise environments.



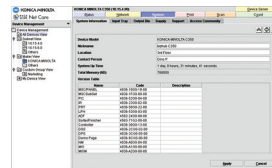
### Device Management

Window lists all MIB-compliant devices on your network, with icons, descriptions, IP addresses and status indication, location and total print count. You can access status information on any device by clicking on the icon.



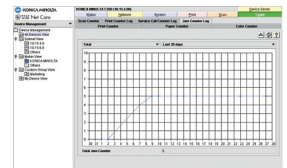
### Device Status

Window gives you detailed print/scan information—including a visual image of each device, simple green/yellow/red color coding to quickly verify status, and icons and descriptions to indicate status conditions.



### Net Care Tabs

display information on specific device attributes, network configurations, installed finishing options, latest firmware, as well as printer and scanner information.



### Log Management

capability allows you to view logs – via the Count Tab—in graphic form, track Color versus B&W output, track total meter reads by account codes\*, and review total print count, error history, and paper jams for each device for 30 days, or up to one year.